

La Mesa Center

6195 Lake Murray Blvd., La Mesa, CA, 91942



Property Highlights

High Profile Corner Location
Densely Populated Trade Area
Street Visibility and easy ingress/egress
Excellent Tenant Synergy

Demographic Highlights & Traffic Counts

- **Median HH Income (3-Mi):**
- **Traffic Counts:** ADT (SANDAG)
- **Daytime Population:** w/in 3 mi. (Map Info 2008)



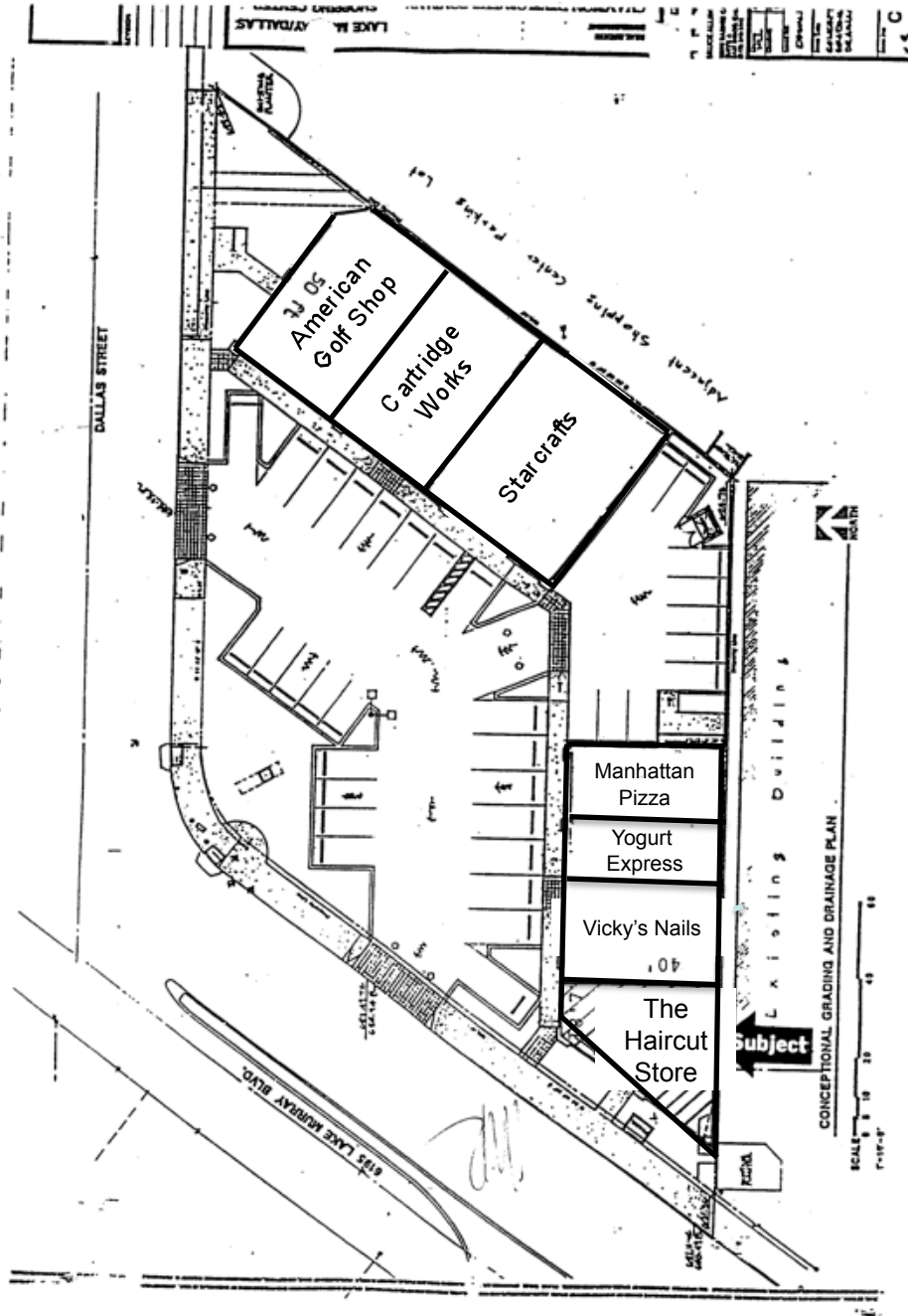
BOARDWALK
DEVELOPMENT, INC.

Ben Longwell
16909 West Bernardo Dr. San Diego, CA 92127
PH 858.485.9300 FX 858.487.1099
ben@boardwalkdevelopment.com

La Mesa Center

6195 Lake Murray Blvd., La Mesa, CA, 91942

Site Plan



BOARDWALK
DEVELOPMENT, INC.

Ben Longwell
16909 West Bernardo Dr. San Diego, CA 92127
PH 858.485.9300 FX 858.487.1099
ben@boardwalkdevelopment.com

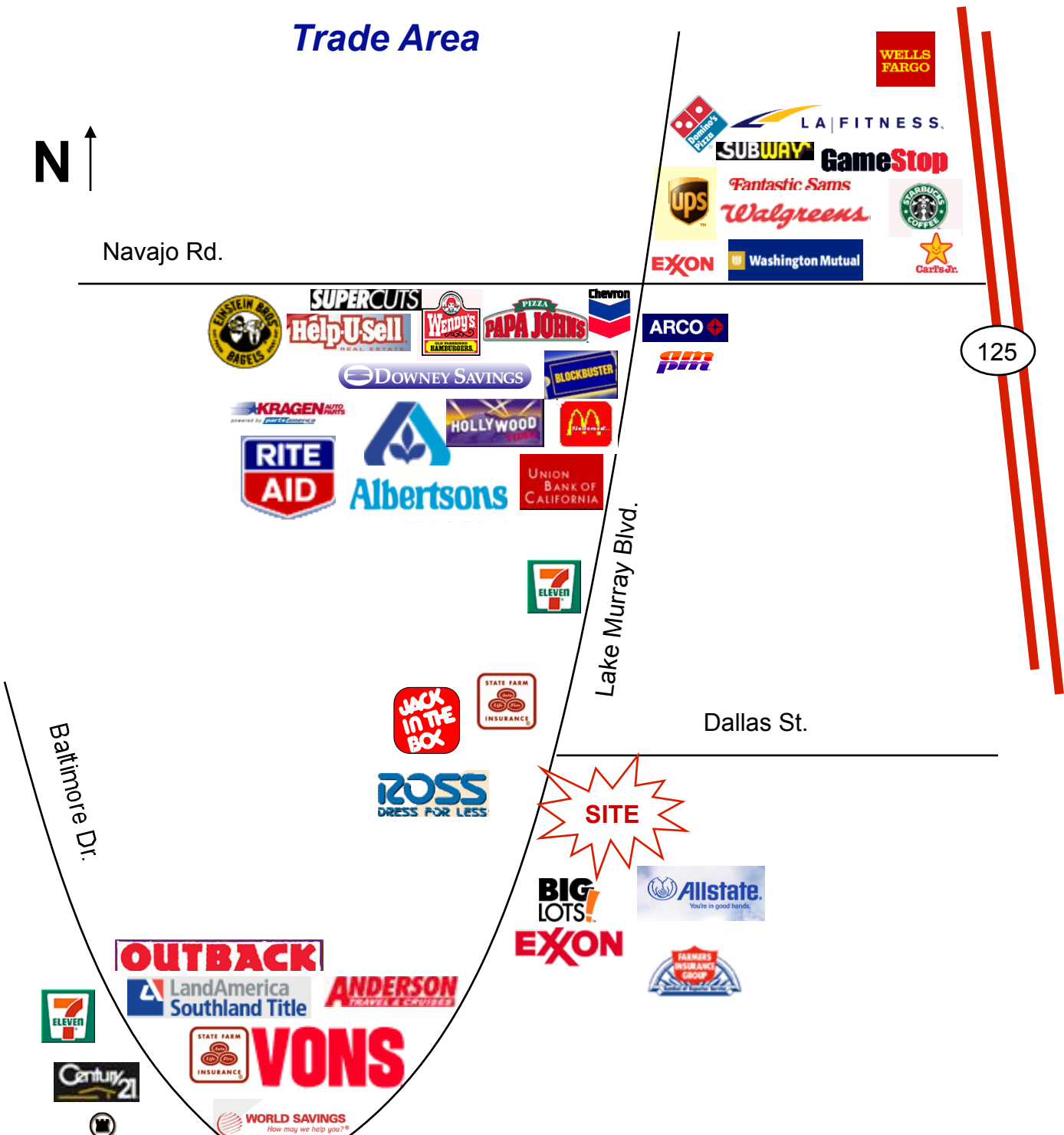
La Mesa Center

6195 Lake Murray Blvd., La Mesa, CA, 91942

Trade Area



Navajo Rd.



BOARDWALK
DEVELOPMENT, INC.

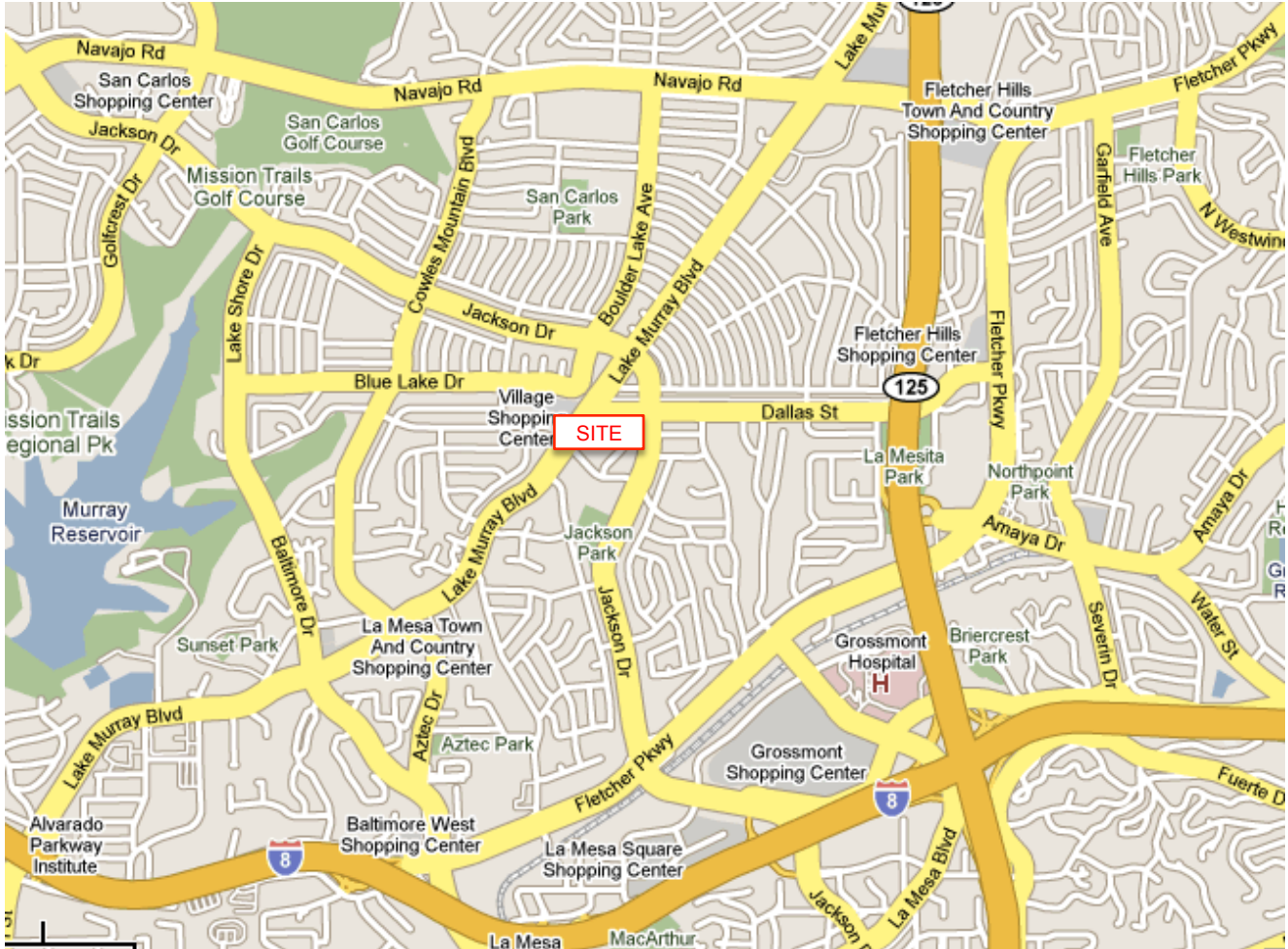
Ben Longwell
16909 West Bernardo Dr. San Diego, CA. 92127
PH 858.485.9300 FX 858.487.1099
ben@boardwalkdevelopment.com

The information contained herein, while obtained from sources believed to be reliable, is not guaranteed.

La Mesa Center

6195 Lake Murray Blvd., La Mesa, CA, 91942

Regional Map



BOARDWALK
DEVELOPMENT, INC.

Ben Longwell
16909 West Bernardo Dr. San Diego, CA 92127
PH 858.485.9300 FX 858.487.1099
ben@boardwalkdevelopment.com